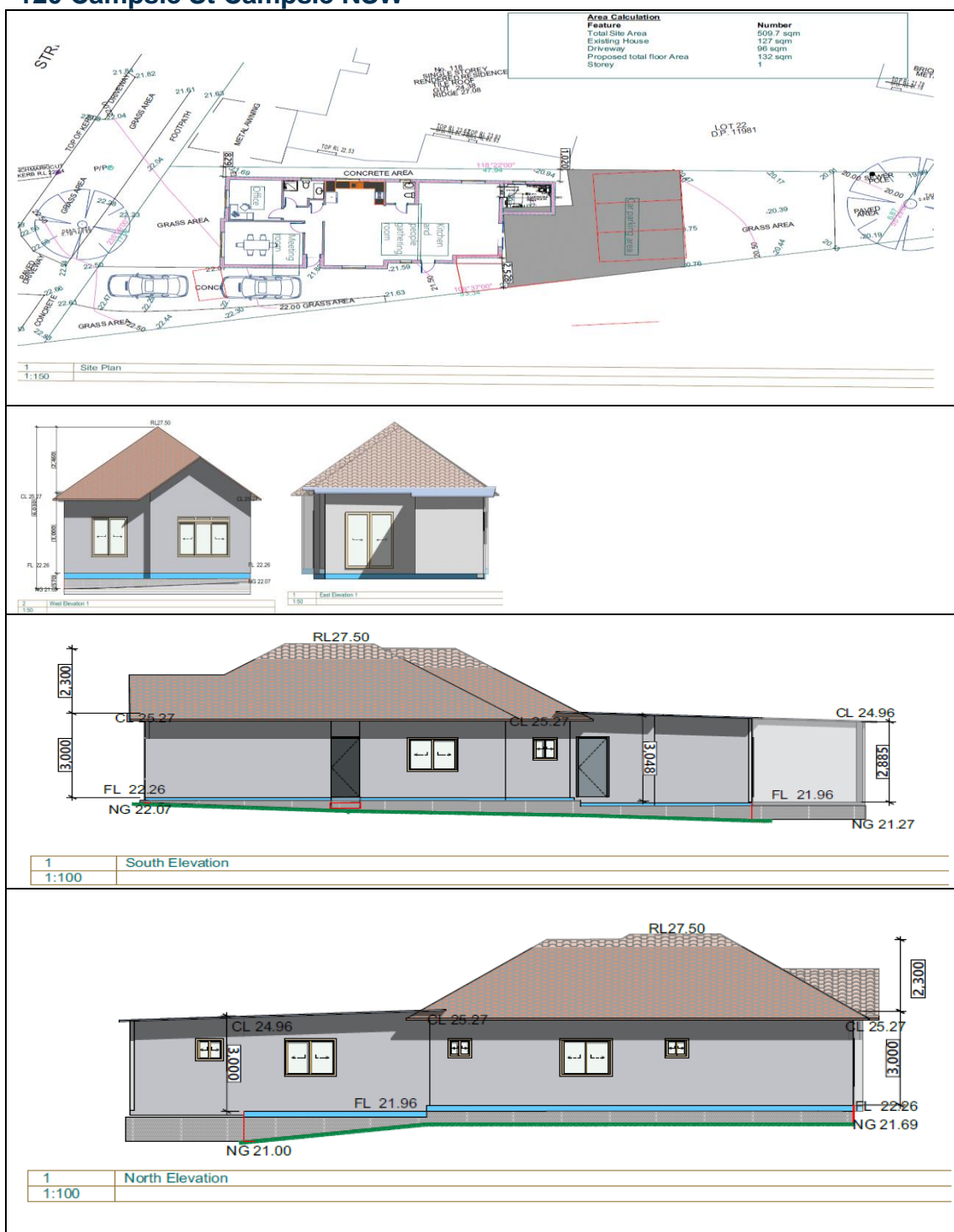


Neighbour Notification Plan 120 Campsie St Campsie NSW



PARSHI ArchiDesign and Construction.

Planning and Architecture Research for Sustainable Housing Integrity (PARSHI)

Office Address

Office 2, Level 1, 208A Beamish St, Campsie,

NSW 2194 Contact: Mob: 0425834401, ph 02 80331960 www.parshi.com.au, Email:

Info@parshi.com.au